



**Cambodia Biodiversity
Conservation Corridors Project:**

**Experience on Assisting Community Forests
For Multiple Uses**

**Dr Jeffrey Weber
Chief Technical Advisor
*Cambodia Biodiversity
Conservation Corridors Project***

Key Activities of the BCC Project

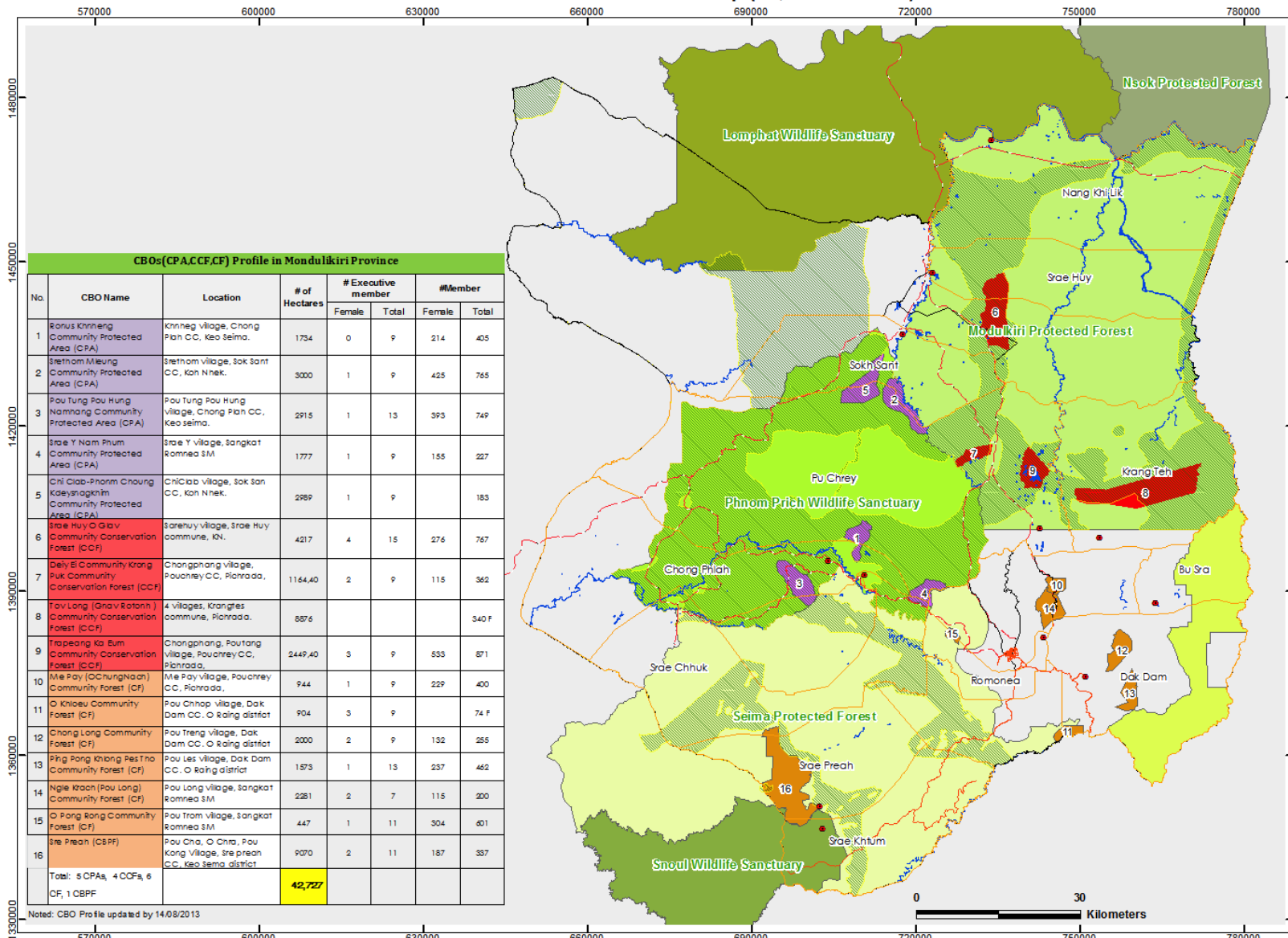
- Strengthen government agencies and communities to manage forest and biodiversity conservation through community forests
- Protect and enhance forests, protect ecosystem services
- Improve livelihoods that lead to forest conservation

BCC Project

Quick Facts

- 9 Community Forests (CFs) and Community Protected Areas (CPAs) and their communities in Koh Kong
- 15 CFs and CPAs and their communities in Mondulkiri
- Began 2012
- Ends in 2019
- Initial budget of \$19 million
 - Grant-funded by ADB
- Expanded budget \$28 million, starting 2014
 - through PPCR funds

Monduliri Province's Land Use Map (CF, CPA and CCF)

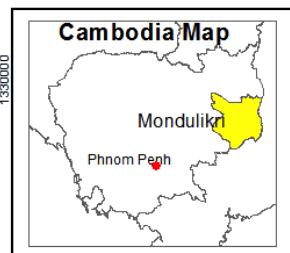


Legend

- Commune Center
- Proposed Road (location approx.)
- Road
- BCC Target communes
- Commune Boundary
- Stream River lake
- BC(I/Phase) Corridor or Area

Community Area

- Commune Conservation Area
- Community Protected Area
- Community Forestry



| CBOs(CPA,CCF,CF) Profile in Monduliri Province | | | | | | | |
|--|--|---|---------------|--------------------|-------|---------|-------|
| No. | CBO Name | Location | # of Hectares | # Executive member | | #Member | |
| | | | | Female | Total | Female | Total |
| 1 | Borus Khneng Community Protected Area (CPA) | Khneag village, Chong Pih CC, Keo Selma. | 1734 | 0 | 9 | 214 | 405 |
| 2 | Sethom Meung Community Protected Area (CPA) | Sethom village, Sok Sant CC, Kon Nhek. | 3000 | 1 | 9 | 425 | 765 |
| 3 | Pou Tung Pou Hung Namng Community Protected Area (CPA) | Pou Tung Pou Hung village, Chong Pih CC, Keo Selma. | 2915 | 1 | 13 | 393 | 749 |
| 4 | Sae Y Nam Phum Community Protected Area (CPA) | Sae Y village, Sangkat Romnea SM | 1777 | 1 | 9 | 155 | 227 |
| 5 | Chl Clab-Phnom Choung Kaleyngkhim Community Protected Area (CPA) | Chl Clab Village, sok san CC, kon Nhek. | 2969 | 1 | 9 | | 185 |
| 6 | Sae Huy O Glav Community Conservation Forest (CCF) | Sarehuy village, Sae Huy commune, KN. | 4217 | 4 | 15 | 276 | 767 |
| 7 | Daly E Community Krang Puk Community Conservation Forest (CCF) | Chongphang village, Pouchrey CC, Pohnrada. | 1164,40 | 2 | 9 | 115 | 362 |
| 8 | Tav Long (Gnav Rotonn) Community Conservation Forest (CCF) | 4 villages, Krangtes commune, Pohnrada. | 8876 | | | | 340 F |
| 9 | Trapeang Ka Eum Community Conservation Forest (CCF) | Chongphang, Pouyang village, Pouchrey CC, Pohnrada. | 2449,40 | 3 | 9 | 533 | 871 |
| 10 | Mie Pay (CChungNaon) Community Forest (CF) | Mie Pay Village, Pouchrey CC, Pohnrada. | 944 | 1 | 9 | 229 | 400 |
| 11 | O Khleu Community Forest (CF) | Pou Chhup village, Dak Dam CC, O Raing district | 904 | 3 | 9 | | 74 F |
| 12 | Chong Long Community Forest (CF) | Pou Treng village, Dak Dam CC, O Raing district | 2000 | 2 | 9 | 132 | 255 |
| 13 | Pig Pong khong Pestho Community Forest (CF) | Pou Les village, Dak Dam CC, O Raing district | 1573 | 1 | 13 | 237 | 462 |
| 14 | Ngie Kraoh (Pou Long) Community Forest (CF) | Pou Long village, Sangkat Romnea SM | 2281 | 2 | 7 | 115 | 200 |
| 15 | O Pong Rang Community Forest (CF) | Pou Trom village, Sangkat Romnea SM | 447 | 1 | 11 | 304 | 601 |
| 16 | Sre Preah (CBPF) | Pou Cha, O Chra, Pou Kang village, Sre preah CC, Keo Selma district | 9070 | 2 | 11 | 187 | 337 |
| Total: 5 CPAs, 4 CCFs, 6 CF, 1 CBPF | | | 42,727 | | | | |

Noted: CBO Profile updated by 14/08/2013

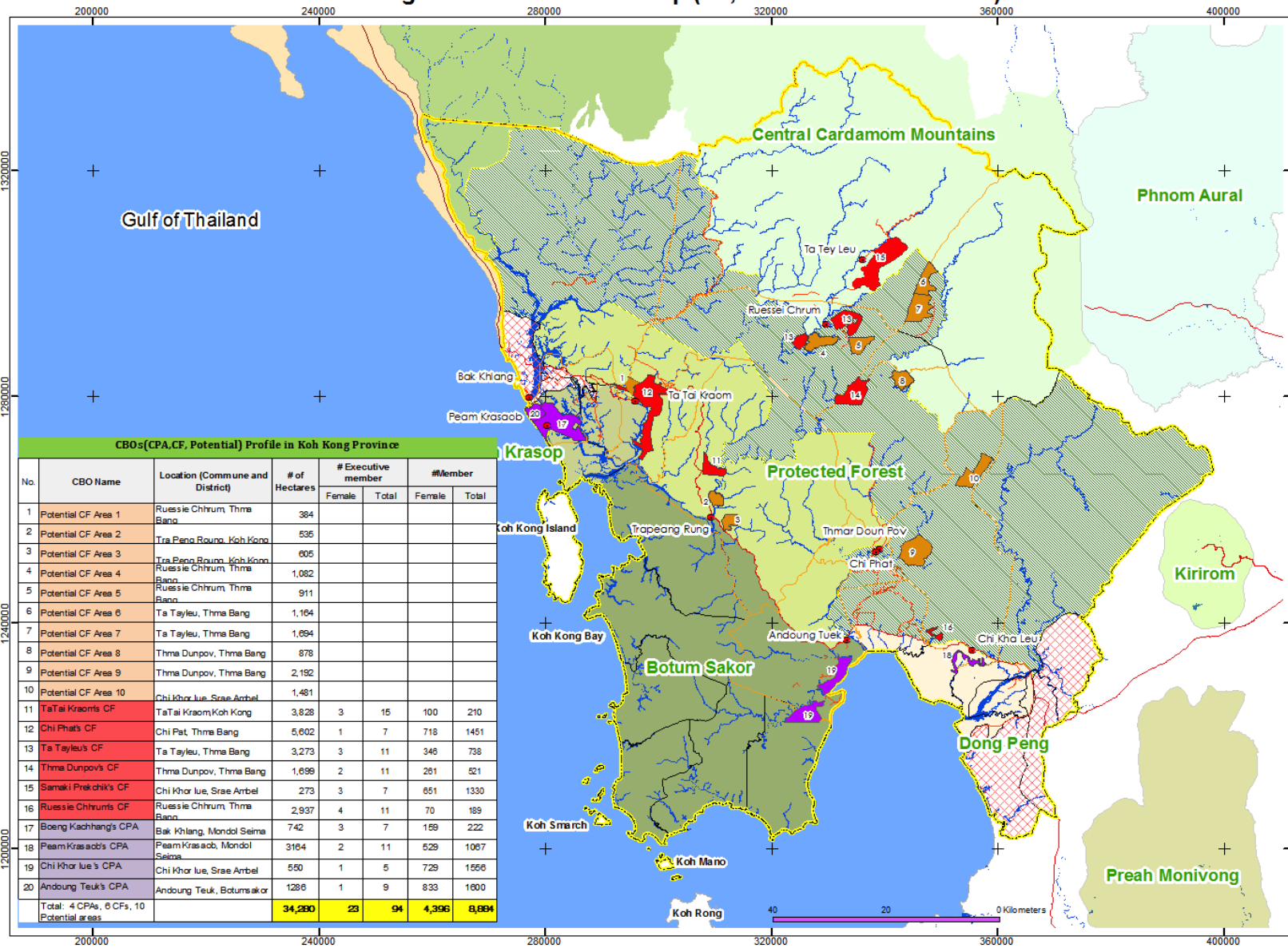
Prepared and Layout by:
GMS's Bio diversity Conservation Corridor Project
Central Project Coordination Unit



Data Source:
Administrative data : JICA 2002, Department of Geography
Protected Area : Ministry of Environment
Forest Cover 2010: Forestry Administration
CF,CCF and CPA : WWF,WCS and Monduliri Forestry Administration

Projection : UTM
Zone : 48
Datum : WGS84
Scale:
1:671,000
1 centimeter = 6,710 meters

Koh Kong Province Land Use Map (CF, CPA and Potential Area)



Legend

- Commune center
- Thai_Highway3
- Roads
- Foot path
- Stream, perennial
- Commune Target Area
- Provincial Boundary
- Environmental Sensitive Development Zone
- Commune Boundary
- Waterbody
- BC(Phase1) Corridor Area

Community Areas

- Community Protected Area
- Community Forestry
- Potential Area

CBOs(CPA,CF, Potential) Profile in Koh Kong Province

| No. | CBO Name | Location (Commune and District) | # of Hectares | # Executive member | | # Member | |
|---|----------------------|---------------------------------|---------------|--------------------|-----------|--------------|--------------|
| | | | | Female | Total | Female | Total |
| 1 | Potential CF Area 1 | Ruessie Chhrum, Thma Bang | 384 | | | | |
| 2 | Potential CF Area 2 | Tra Peng Roun, Koh Kong | 536 | | | | |
| 3 | Potential CF Area 3 | Tra Peng Roun, Koh Kong | 605 | | | | |
| 4 | Potential CF Area 4 | Ruessie Chhrum, Thma Bang | 1,082 | | | | |
| 5 | Potential CF Area 5 | Ruessie Chhrum, Thma Bang | 911 | | | | |
| 6 | Potential CF Area 6 | Ta Tayleu, Thma Bang | 1,164 | | | | |
| 7 | Potential CF Area 7 | Ta Tayleu, Thma Bang | 1,694 | | | | |
| 8 | Potential CF Area 8 | Thma Dunpov, Thma Bang | 878 | | | | |
| 9 | Potential CF Area 9 | Thma Dunpov, Thma Bang | 2,192 | | | | |
| 10 | Potential CF Area 10 | Chi Khor Iue, Srae Arbel | 1,481 | | | | |
| 11 | Ta Tai Kraom's CF | Ta Tai Kraom, Koh Kong | 3,828 | 3 | 15 | 100 | 210 |
| 12 | Chi Phat's CF | Chi Pat, Thma Bang | 5,602 | 1 | 7 | 718 | 1451 |
| 13 | Ta Tayleu's CF | Ta Tayleu, Thma Bang | 3,273 | 3 | 11 | 346 | 738 |
| 14 | Thma Dunpov's CF | Thma Dunpov, Thma Bang | 1,699 | 2 | 11 | 261 | 521 |
| 15 | Samak Prek Chik's CF | Chi Khor Iue, Srae Arbel | 273 | 3 | 7 | 651 | 1330 |
| 16 | Ruessie Chhrum's CF | Ruessie Chhrum, Thma Bang | 2,937 | 4 | 11 | 70 | 189 |
| 17 | Boeng Kachhang's CPA | Bak Khlang, Mondol Seima | 742 | 3 | 7 | 169 | 222 |
| 18 | Peam Krasaob's CPA | Peam Krasaob, Mondol Seima | 3184 | 2 | 11 | 529 | 1087 |
| 19 | Chi Khor Iue's CPA | Chi Khor Iue, Srae Arbel | 550 | 1 | 5 | 729 | 1566 |
| 20 | Andoung Teuk's CPA | Andoung Teuk, Botum Sakor | 1286 | 1 | 9 | 833 | 1600 |
| Total: 4 CPAs, 6 CFs, 10 Potential areas | | | 34,290 | 23 | 94 | 4,396 | 8,694 |



Prepared and Layout by:
GMS's Biodiversity Conservation Corridor Project
Central Project Coordination Unit



Ministry of Environment
General Department of Administration
for Nature Conservation and Protection.



Forest Administration
Institute of Forest and Wildlife Research
and Development

Data Source:
Administrative data : JICA 2002, Department of Geography

Protected Area : Ministry of Environment
Forest Cover 2010: Forestry Administration
CF, CPA and Potential Area : NCDD and Koh Kong Forestry Administration
and Ministry of Environment

Scale:
1:652,000

Projection : UTM
Zone : 48
Datum : WGS84

Project Approach, Part 1

Forest and Biodiversity Conservation

Focus on biologically and ecologically high-value areas

- Approaches
 - Identify areas with high-value biodiversity
 - Enhance forest and habitats
 - Protect forest and habitat from
 - Illegal logging
 - Wildlife poaching
 - Land conversions

Project Approach, Part 2

Forest and Biodiversity Conservation

Support communities to improve livelihoods that incentivize forest conservation

Approaches

- Increase incomes in short-term
 - Payments for community forest patrols
 - Payments for forest restoration
- Increase incomes in long-term
 - Revolving funds managed by communities to help households
 - New livelihood opportunities in smallholder ag and agroforestry
 - Establish value-added processing of ag and forest products

Above Are Community Based; Also Need National Approaches

- Watershed management
- Community protection of forests needs to be linked to national or provincial enforcement
 - Enforcement and judicial systems need to be strengthened
- Land tenure
- Improved and coordinated management needed for national parks, national protected forests, wildlife sanctuaries

What We Have Learned So Far

- Preliminary information suggests that CFs have limited high-quality areas of biodiversity/habitat
 - how to deal with areas outside of CFs or CPAs (which are the project's mandate)?
 - Forest enhancement is proceeding, but without a strong rationale with respect to biodiversity

What We Have Learned So Far

- Community-based protection against illegal logging needs to be combined with
 - enforcement from rangers/police
 - a judicial system that can issue effective penalties for illegal logging
 - Involvement of local and provincial authorities who sincerely want to stop illegal logging.

What We Have Learned So Far

- Communities must have values and culture that enables them to want forest conservation

What We Need to Learn

- How to practically link livelihood improvements to incentives for forest conservation, or sanctions for not conserving

Research Needs - Biophysical

- Refinements on how to identify and target high value biodiversity/habit areas for protection and enhancement
- Enhancement of forests and habitats. Have we got the right species mix and the right approach to planting? Conservation vs production forests?
- Enhancement of tree species. Can we improve growth rates, resilience to changing water and and climate conditions?

New FA IRD research stations will be established to investigate issues around enhancement of conservation forests

Research Needs – Socio-Economic, Institutions

- How to improve enforcement against illegal forest activities, especially in community and conservation forests
- How to implement links between livelihoods and forest/biodiversity conservation
- How to improve institutional development to better manage national parks, protected forests, wildlife sanctuaries
- How to develop private sector investments into production forestry